

Linthorpe Pottery

An Interim Report

IDENTIFICATION MARKS FOUND ON LINTHORPE ART POTTERY



1. (Impressed). A mark probably indicating a type of glaze or less probable the glazer responsible for the glazing.



2. (Impressed).
As for Mark 1.



3. (Incised)



4. (Incised)



5. (Incised)



6. (Incised)



7. (Impressed)



8. (Black underglaze).
Probably
Alec Burns.



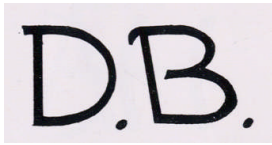
9. (Incised and
black underglaze).
As for Mark 8.



10. (Incised and black
underglaze). As for
Mark 8.



11. (Incised
and black
underglaze).



12. (Black underglaze)



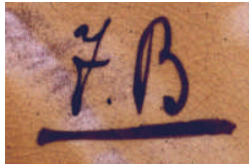
13. (Black underglaze)



14. (Incised and underglaze). Probably Fred Brown



15. (Incised and underglaze). As for Mark 14.



16. (Black underglaze). As for Mark 14.



17. (Incised)



18. (Black underglaze)



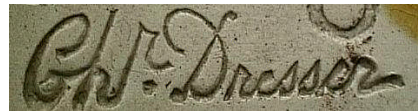
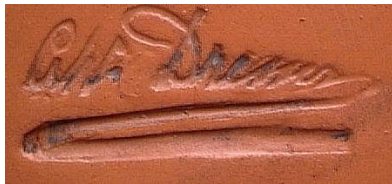
19. (Incised)



20. (Incised)



21. (Impressed). Probably a 'Glaze' mark.



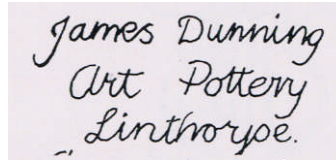
22. (Impressed – several variations). Mark of Dr. Christopher Dresser.



23. (Full stamp impressed with Dresser signature and Henry Tooth monogram).



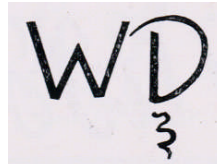
24. (Underglaze) Variations.



25. (Mark incised on unique slab-built money box in collection of Dorman Museum).



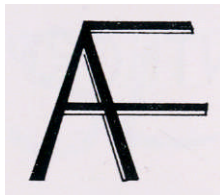
26. (Incised). Probably William Davison.



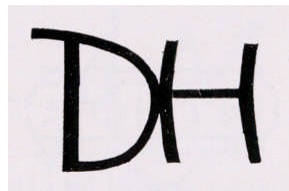
27. (Black underglaze). As for Mark 26 other variations.



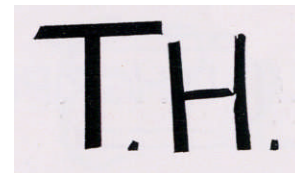
28. (Incised). Probably Arthur Fuller.



29. (Incised). As for Mark 28.



30. (Black underglaze). Probably D. Hart.



31. (Black underglaze). Probably Thomas Hudson.



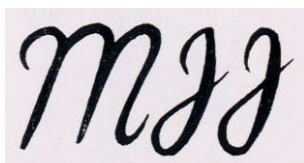
32. (Black underglaze). As for Mark 31.



33. (Black underglaze). As for mark 31.



34. (Impressed). Probably a 'Glaze' mark.



35. (Incised)



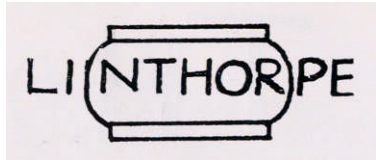
36. (Black underglaze)



37. (Impressed – various heights)



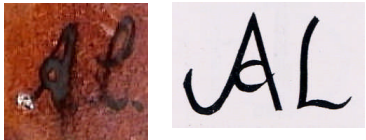
38. (Impressed – various heights).
Registered as trademark 14th
November 1882.



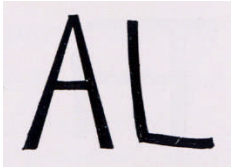
39. (Impressed – various heights).



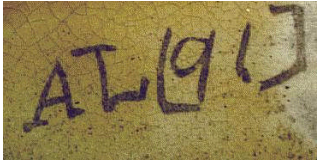
40. A stamp pressed into the clay
to produce raised lettering,
usually found on tiles – (various
heights).



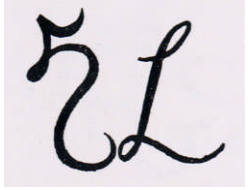
41. (Black underglaze).
Probably Alan Lang.



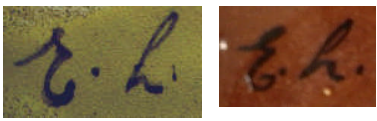
42. (Impressed, incised and
underglaze). As for Mark
41.



43. (Black underglaze).
As for Mark 41.



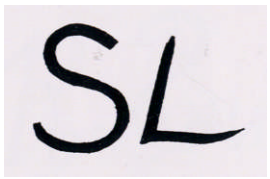
44. (Underglaze).



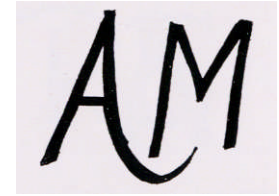
45. (Underglaze).



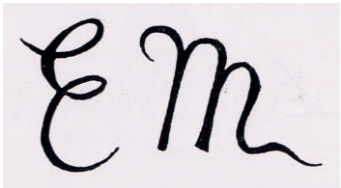
46. (Incised and underglaze –
variations). Probably William
Sheldon Longbottom.



47. (Underglaze).
Probably William
Sheldon Longbottom.



48. (Underglaze).



49. (Incised and
underglaze).



50. (Underglaze). Florence Minto.

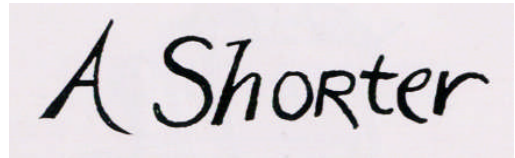
51. (Underglaze). William Metcalf.



52. (Incised and underglaze). Clara Pringle.

53. (Incised). Clara Pringle.

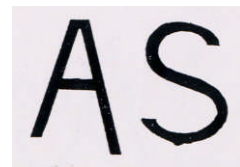
54. (Impressed, incised and underglaze).



55. (Impressed). Probably a 'Glaze' mark.

56. (Impressed, black underglaze and incised).

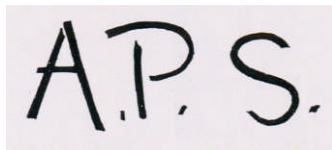
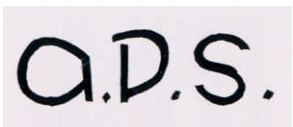
57. (Incised). Arthur Pascal Shorter.



58. (Black underglaze). As for Mark 57.

59. (Incised). As for Mark 57.

60. (Incised and underglaze variations). As for Mark 57.



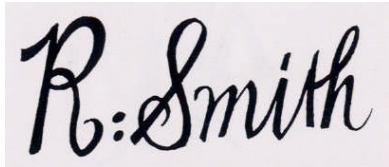
61. (Black underglaze). As for Mark 57.

62. (Incised and underglaze). As for Mark 57.

63. (Incised). As Mark 57.



64. (Underglaze).



65. (Black underglaze).
Miss Rachel Smith.



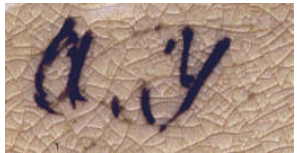
66. (Underglaze – some variations).
As for Mark 65.



67. (Underglaze – other variations). As for Mark 65.



68. (Underglaze).



70. (Underglaze).



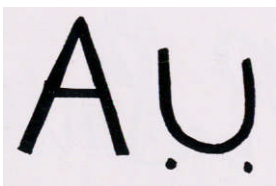
71. (Underglaze).



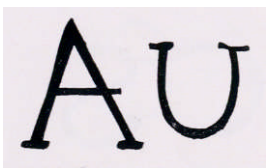
72. (Impressed – various heights and sizes).
Henry Tooth.



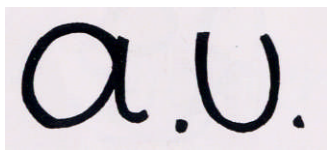
73. (Impressed – various heights and sizes). Henry Tooth.



74. (Underglaze and incised). Annie Umpleby.



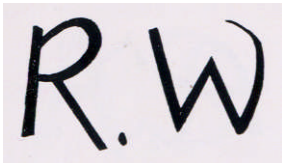
75. (Underglaze and incised). As for Mark 74.



76. (Underglaze and incised). As for Mark 74.



77. (Underglaze).
Possibly Henry Venables.



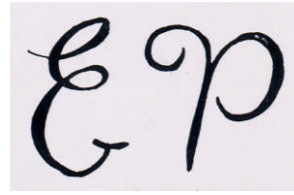
78. (Underglaze)



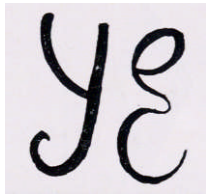
79. (Incised and underglaze). Possibly Lucy Worth.



80. (Underglaze). Possibly Joseph Wright.



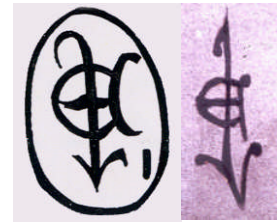
81. (Underglaze). Probably E.P. Miss E. Philips.



82. (Underglaze)



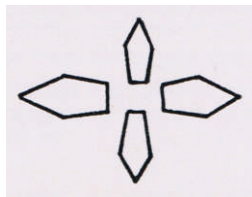
83. (Underglaze)



84. (Underglaze).



85.(Underglaze).



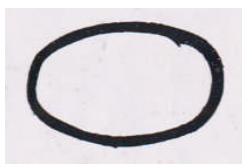
86. (Impressed). Probably a glaze indicating mark.



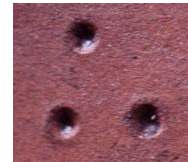
87. (Underglaze). Some variations.



88.(Underglaze).



89. (Underglaze).



90. (Impressed) – a glaze indicating mark – sometimes this mark occurs as a single circle 27mm diameter – with other examples three smaller circles occur in a cluster.



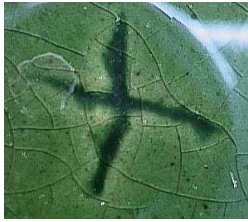
91. (Impressed).
A glaze
indicating mark.



92. (Impressed). A
glaze indicating
mark.



93. (Incised).



94. (Incised and
black underglaze).