

# Middlesbrough Museums

Dorman Museum

Captain Cook Birthplace Museum

## Exhibition Information

### Thresholds

**DORMAN MUSEUM**

**21 April to 21 June 2009**

**Tuesday to Sunday 9:30 to 17:00**

'Thresholds' is a snapshot view of an ongoing dialogue between a varied group of artists, known as the Cluster Group, motivated by the permanent exhibits at the Dorman Museum.

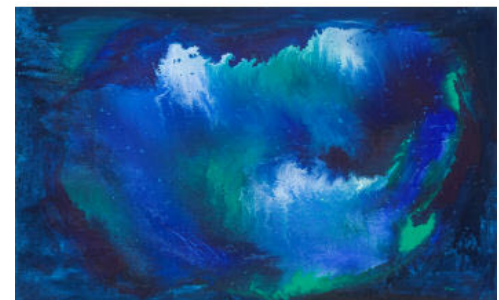
In this exhibition each artist responds in their own way to the idea of a threshold.

*Michael Kusz* produces metal sculptures featuring fantastic creatures. His new work plays with the concept of a doorway as a real and as an abstract form. *Carolyn Corfield* is a ceramic sculptor whose figurative work examines the temporal changes inherent in a threshold as one moves from one time or place to another.

*Sally Wade's* ceramics feature the physical aspects of thresholds within architecture while binding it to the emotional content. *Karin Walland* produces narrative glass sculptures that examine the impact of the threshold of pain from a feminist point of view.

*Peter Heselton's* paintings and drawings focus on the philosophical implications of thresholds, including those reconstructed. *Vera Hynes* paintings examine the air / water interface, and seek to explore the visual changes when moving from liquid to gas and vice versa.

*Tish Bloom's* paintings create an impression in the viewer of crossing over a threshold both visually and psychologically.



The Dorman Museum  
Linthorpe Road  
Middlesbrough  
TS5 6LA  
01642 813781

  
Middlesbrough  
moving forward

Captain Cook Birthplace Museum  
Stewart Park, Marton  
Middlesbrough  
TS7 8AT  
01642 311211